

SMP/Mini-SMP/SMPS

SMP,

Mini-SMP —

50

SMPS,

SMP

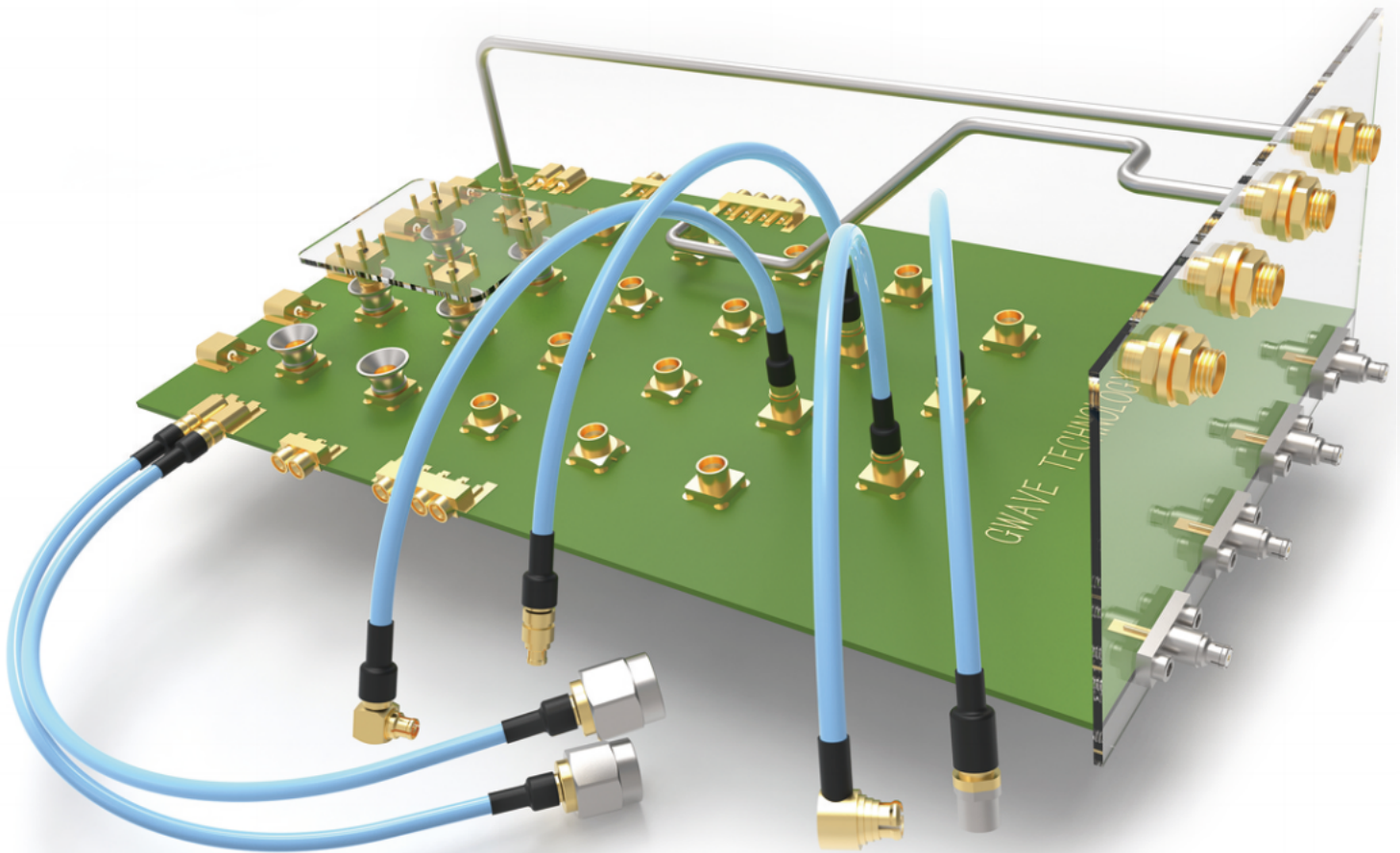
35%

100

Mini-SMP.

45%

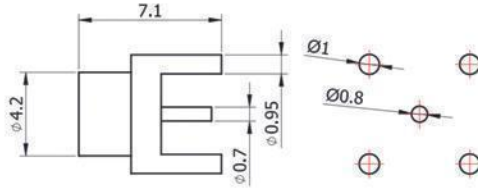
DC-18GHz DC-26.5GHz DC-40GHz



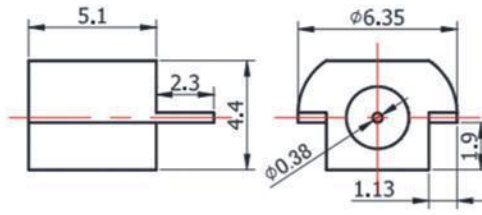
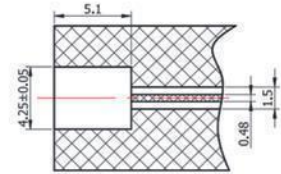
SMP

P/N	Picture	Drawing	Remark
-----	---------	---------	--------

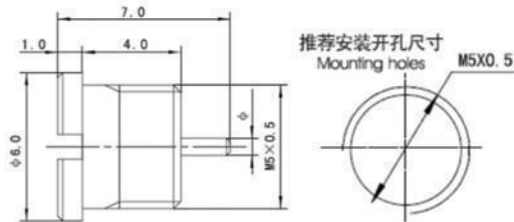
RHT-S-JHD1


1. : /
2.0

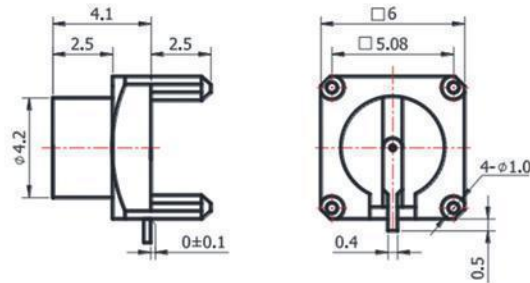
RHT-S-JHD10


1. : /
2.0
3. Brass/Gold Plating


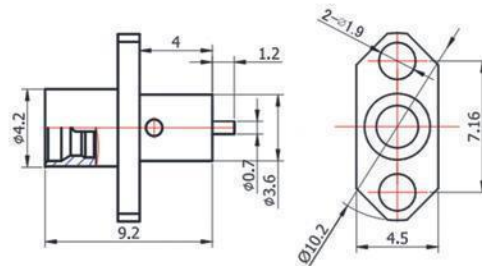
RHT-S-JYD26G-L	0.70mm
RHT-S-JYD26AG-L	0.45mm


1. :
2.0

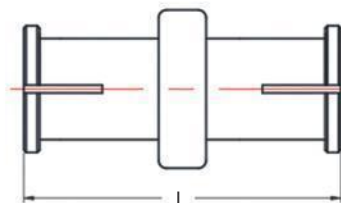
RHT-S-JHD23-L


1. : /
2.

RHT-S-JHD246-L


1. : /
2.

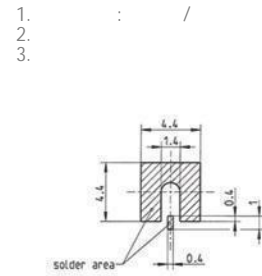
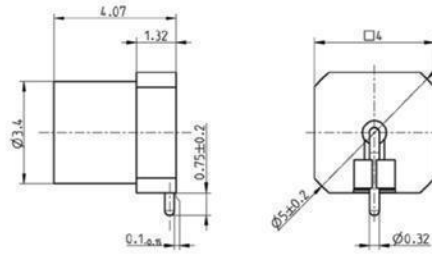
RHT-S-KK4	8.0mm
RHT-S-KK5	8.4mm


1. : /
2. SMP < - >

Mini-SMP

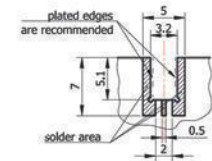
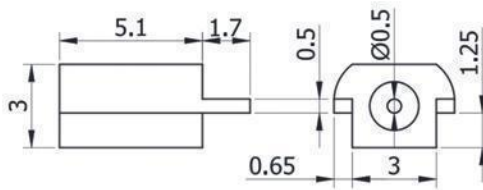
P/N	Picture	Drawing	Remark
-----	---------	---------	--------

RHT-MS-JHD1



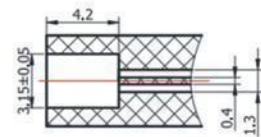
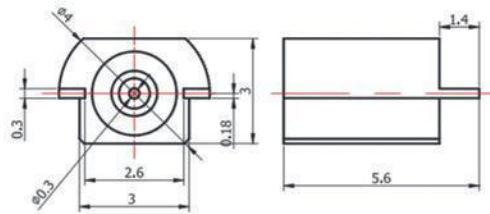
1. : /
- 2.
- 3.

RHT-MS-JHD10



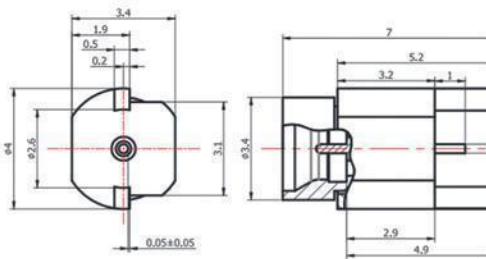
1. : SMP « - »
- 2.

RHT-MS-JHD12



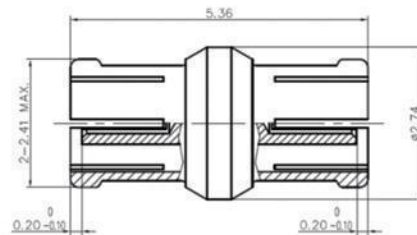
1. : /
- 2.
- 3.

RHT-MS-JHD20R



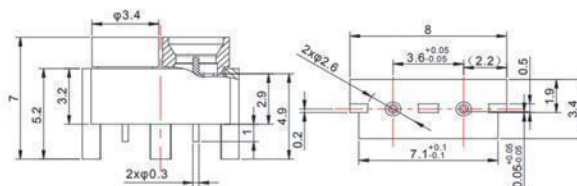
1. : /
- 2.

RHT-MS-KK



1. : Mini-SMP « - »
- 2.

RHT-MS-J2MD

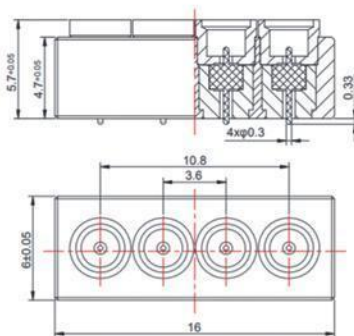


1. : /
- 2.

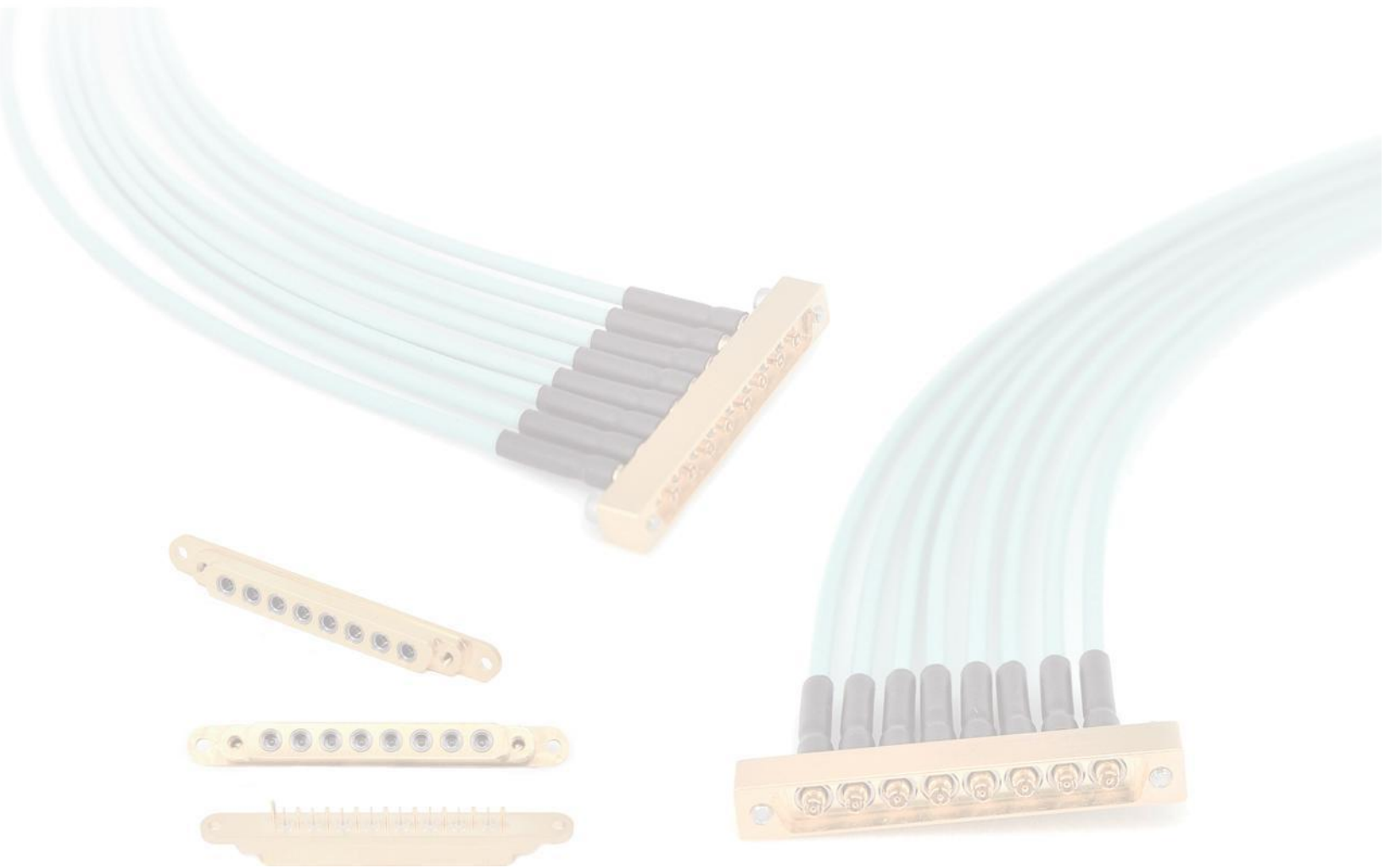
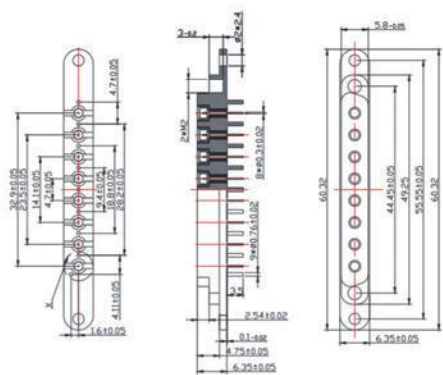
Mini-SMP

P/N	Picture	Drawing	Remark
-----	---------	---------	--------




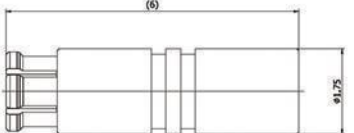

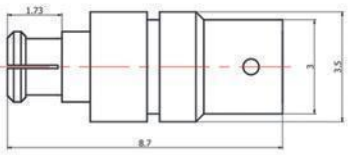

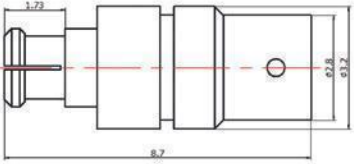

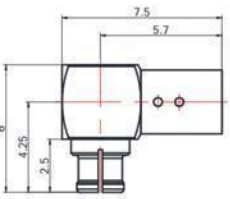

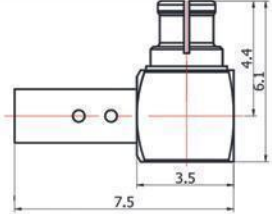
RHT-MS-J4MD


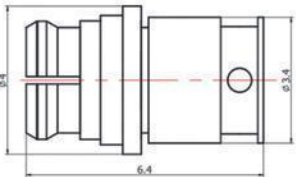

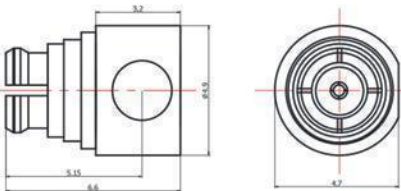

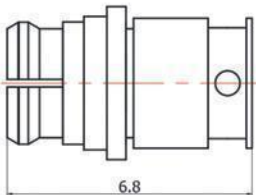

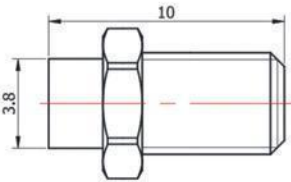

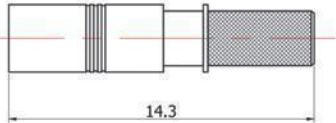

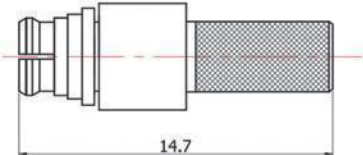

 1. : /
 2.C

RHT-MS-J8MD



SMP/Mini-SMP/SMPS

P/N	Picture	Drawing	Remark
RHT-SS-KB2			085 / RG405
RHT-SS-KB1			047 /
RHT-MS-KB2			085 / RG405
RHT-MS-KB2-3			085 / RG405
RHT-MS-KWB2			085 / RG405
RHT-MS-KB1			047 /

P/N	Picture	Drawing	Remark
RHT-S-KB2			085 / RG405
RHT-S-KWB2			085 / RG405
RHT-S-KB1			047 /
RHT-S-JYB2			085 / RG405
RHT-S-J3			RG316
RHT-S-K3			RG316