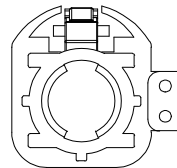
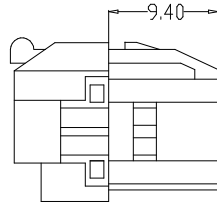
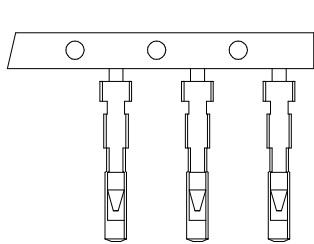
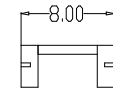
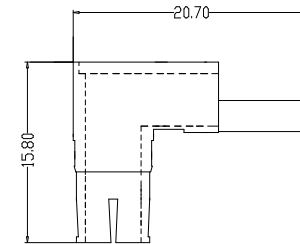
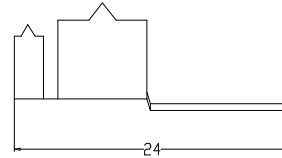
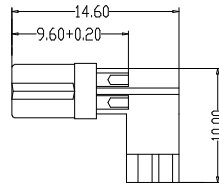
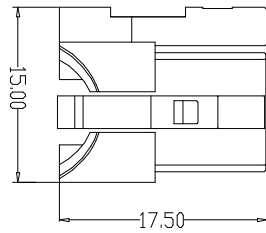
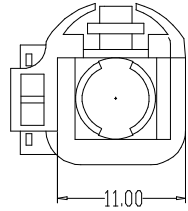




Product NO.		DOSIN-877-2035		
REV	DESCRIPTION	DWN	DATE	APPROVEN
R1.0	First issue	Gavin	2023/04/12	JIM.KING



- Electrical performance:
- 1.1 characteristic impedance: 100Ω
 - 1.2 Insulation resistance: 100MΩ min
 - 1.3 Voltage withstand: 250V AC
 - 1.4 Contact resistance: Inner conductor 10mΩ Max
Outer conductor 7.5mΩ Max
 - 1.5 Frequency: 0-2GHz
2. Mechanical properties:
- 2.1 Insertion and removal durability: ≥ 25 times
 - 2.2 Working temperature: -40 °C~105 °C
 - 2.3 Axial pull-out force: ≥ 110N
3. Meet environmental RoHS requirements

Coding	Graphics	Colour	Coding	Graphics	Colour
A		Jet Black	G		Blue Gray
B		Cream	H		Heather Violet
C		Signal Blue	J		Beige
D		Clart Violet	K		Curry
E		Leaf Green	L		Carmine Red
F		Nut Brown	M		Pastel Orange
Z		Water Blue	O		Pastel Green

NO	Description	Material	Finish	QTY
1	Shell	Engineering plastics		1
2	Buckle	Engineering plastics		1
3	Body	Zinc alloy/Brass	Nickel	1
4	Insulator	Engineering plastics	None	1
5	Center pin	Brass	Gold	4
6	Rivet tube	Brass	Nickel	1

NOTE:	Tolerance	0.5 - 8mm ± 0.20mm 8 - 30mm ± 0.25mm 30 - 120mm ± 0.30mm	东莞市德索精密工业有限公司 Dongguan Dosin Precision Industry Co.,Ltd
	DRAWN Gavin	View	
CHECKED	UNIT	MM	SIZE A Product NO. DOSIN-877-2035 REV A
APPROVALS John kine	SCALE	1:1	DateTime 2023/04/12 CAD FILE D/company drawings/BD SHEET: 1 OF 1